

Application of Time-Dependent MALDI-TOF Mass Spectral Analysis To Elucidate Chain Transfer Mechanism during Cationic Polymerization of Oxazoline Monomers Containing Thioethers [Macromolecules 2010, 43, 10152–10156]. Mallory A. dCortez, and Scott M. Grayson*

Page 10154. Revisions to Figure 2 were printed in the place of Figure 1. The original submitted Figure 1 is included to replace the misprinted Figure 1.

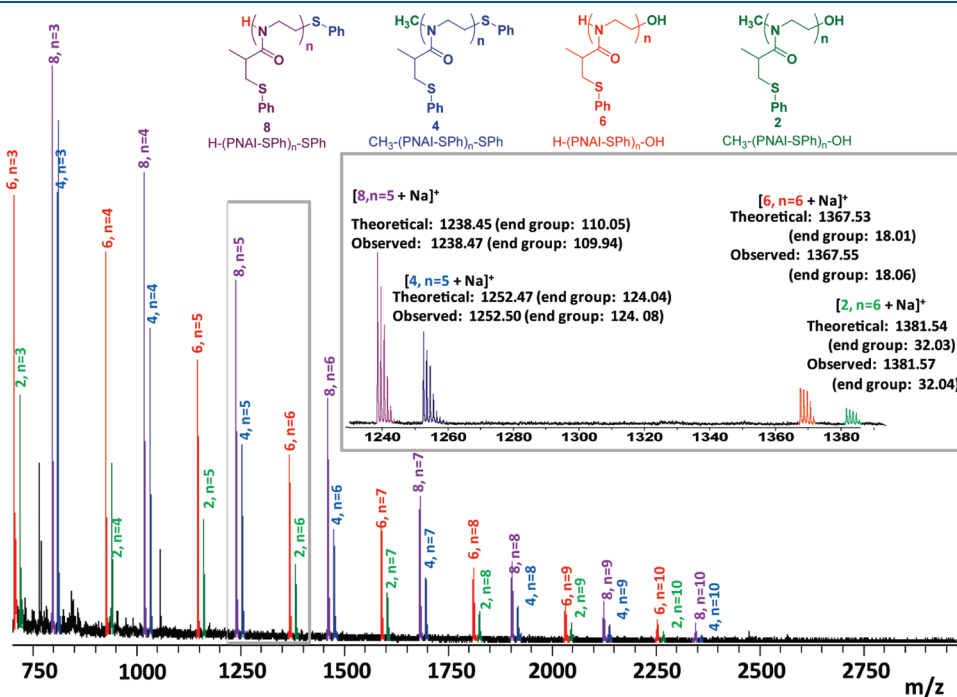


Figure 1. MALDI-TOF MS spectrum of PNAI-SPh after 1 h (monoisotopic exact mass used in calculations for all distributions).

DOI: 10.1021/ma200236f
Published on Web 02/25/2011